



CONTACT INFORMATION

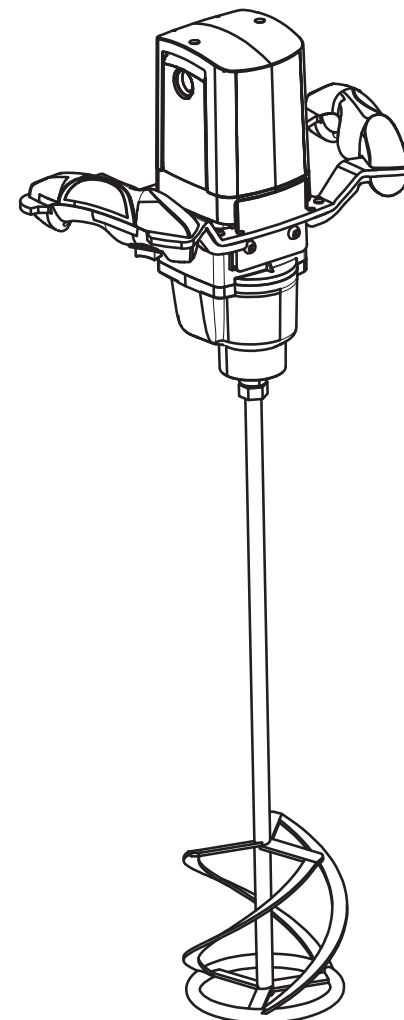
For sales, service, warranty and part orders, please call

| LOCATION | SALES | SERVICE, SPARE PARTS & WARRANTY |
|-----------|---|--|
| AUSTRALIA | TEL +61 2 9460 8071 FAX +61 2 9439 9815 EMAIL sales@makinex.com.au ADDRESS 15 Waltham Street Artarmon NSW 2064 | TEL 1300 795 953 or +61 2 9460 8071 EMAIL service@makinex.com.au |
| USA | TEL 855-625-4639 EMAIL sales@makinex.com ADDRESS 4232 Artesia Blvd Torrance, CA, 90504 | TEL 855-625-4639 EMAIL service@makinex.com |
| EUROPE | TEL +31 (0)6 24881203 or +31 (0)6 50841849 EMAIL info@mtools.eu ADDRESS Rietdijk 4 3994 AJ Houten The Netherlands | TEL +31 (0)6 24881203 or +31 (0)6 50841849 EMAIL info@mtools.eu |
| UK | TEL +44 7515413992 EMAIL r.boswell-mundav@makinex.co.uk | TEL +44 7515413992 EMAIL r.boswell-mundav@makinex.co.uk |
| CHINA | TEL 18951118278 EMAIL sales@makinex.com.cn ADDRESS Suzhou Industrial Park Xinghai Street on the 16th Jinying Pioneering Park, 2nd Floor, Area C | TEL 18951118278 EMAIL sales@makinex.com.cn |

Or your nearest MAKINEX distributor

We have very knowledgeable, experienced staff to assist you with help and advice.

MAKINEX[®] ELECTRIC MIXER



ELECTRIC MIXER

MS-M-AU

MS-M-EU

MS-M-UK

MS-M-US





Technical Data

| | | |
|------------------------|--------------------------|--------------------------|
| Model | | |
| Power input | 1800w | 1900w |
| No-load speed 1st Gear | 150-300min ⁻¹ | 150-300min ⁻¹ |
| 2nd Gear | 300-650min ⁻¹ | 300-650min ⁻¹ |
| Tool Fitting | M14 | M14 |
| Whisk – ϕ | 160mm | 160mm |
| Weight | 8.0kg | 8.0kg |
| Class of protection | II/□ | II/□ |

Control Elements

1. Switch / regulator
2. Arresting pin
3. Ventilation holes
4. Tool mount
5. Speed selector switch
6. Supplementary handle
7. Flat open-end wrench
8. Whisk

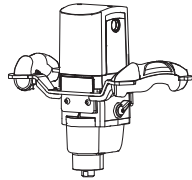
Not all of the accessories illustrated or described are included as standard delivery.

Safety Precautions



Safe work with the instrument is only possible after you read thoroughly this manual for use and maintenance and observe precisely the here specified instructions.

- ❑ Observe also other safety directions that are a part of each instrument delivery.
- ❑ Check the flexible lead and plug before each use of the instrument. Have the faults removed by an expert.
- ❑ The instrument should not be operated in damp, wet premises; during a rain, fog and snow in the open, and in environment with a risk of explosion.
- ❑ Before putting the plug in the mains socket the switch should be in the "off" position.
- ❑ Take care of long hair and fashion accessories, work in properly buttoned-up clothes, without freely flowing parts.
- ❑ Secure the vessel with the mixed substance against moving on the floor.
- ❑ Always direct backwards the flexible lead from the instrument, flexible lead should not be exerted by tensile stress and should not lie on or pass over sharp edges.
- ❑ Take care that you take a safe and firm stand at work.
- ❑ Use the supplementary handle.
- ❑ Consider possible reaction torque.



Mixer X 1



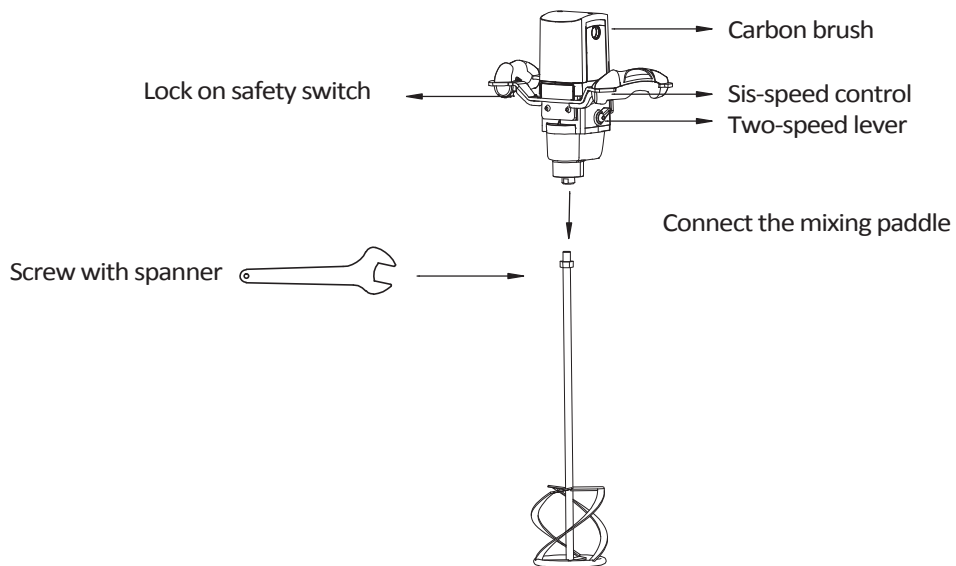
Paddle X 1



Wrench X 2

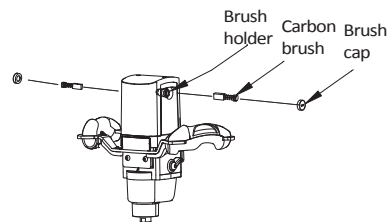


Carbon brush X 2



*** Replace the carbon brush**

1.) Take straight screwdriver to screw out the brush cap.
2.) Take out the waste carbon brush.
3.) Put the new carbon brush into the brush holder inside.
4.) Take straight screwdriver to tighten the brush cap.



*** Attention !**

If you can not turn the two speed lever, just set up the paddles and rotate them gently. Never try to force to turn the lever or disassemble the machine !



Starting Operation and Use

Improper use may damage the instrument.

Observe therefore these instructions:

- Use a tool up to the specified diameter
- Load the instrument in such a way that the speed would not drop considerably or that it would stop.

Check if the data on the rating plate correspond with the actual mains voltage. Instrument scheduled for 110V/230V can be plugged to 110V/220V/240V mains.

Fixing a whisk

Screw tools with thread M 14 x 2 as far as possible in the tool mount and tighten properly with an open-end wrench (22mm) from among the accessories.

Switching on and off

By pressing the switch button the apparatus is brought into operation and it stops when this is relieved.

Permanent run

By pressing the switch button to the stop and simultaneous pressing the arresting pin permanent run is achieved.

By subsequent pressing and relieving of the switch button the permanent run is interrupted.

Unloading the tool (whisk)

Fit a flat open-end wrench (22mm) on the hexagon end of the tool (whisk) and unscrew the tool from the spindle by turning it to the left.

Electronic Motor Control

Starting current limiting

The electronically controlled smooth start takes care that the machine starts without jerk. In this manner, the splashing of thin liquid materials is prevented at the same time when switching on the machine.

As a result of the machine's reduced starting current, a 7.8A fuse is sufficient.

No-load speed reduction

The electronic control reduces the no-load speed of the machine which results in reduced noise and wear of motor and gear.

Speed pre-selection

With the speed control (11), the speed can be continuously pre-selected:

The necessary speed is dependent on the type of material to be mixed. It is recommended that it be confirmed with a practical trial.

Speed selection

Two rpm ranges can be preselected with the speed selector switch (51):

Speed 1: 150 min⁻¹ - 300min⁻¹

Speed 2: 300 min⁻¹ - 650min⁻¹

The necessary speed depends on the type of the material mixed and it is recommended to verify it by a practical test.

Constant Electronics

The constant electronics keeps the speed between no-load and load nearly constant and ensures uniform mixing of the materials.

Electronic overload protection

In case that the machine is extremely overloaded, an electronic overload protection protects the motor from damage. In this case, the motor stops and restarts only after the feeding pressure is reduced, res. After relief.



Temperature-dependent overload protection

To protect the motor from overheating at extreme permanent load, it is switched off by the protective electronic system when a critical temperature is reached

After a cooling-down period of approx. 3-5 min, the machine is again ready for use and can be fully loaded.

When the machine is warmed by use, the temperature-dependent overload protection reacts earlier as a result.

Storage


The unit should be stored in a dry place where it is protected against freezing.

Environmental Protection

Do not open worn out machines and return to the collection facilities provided for recycling.

Maintenance

- The ventilation slots on the motor casing should be cleaned out from time to time.
- When the carbon brushes are worn out, see the instruction in Page 2 to replace the carbon brush. There is 1 pair replacement carbon brush in the package. For more carbon brush, please purchase from the dealer.
- After approx. 100 hours of operation, check the motor brushes and replace if necessary. Clean the motor housing.
- After approx. 200 hours of operation, renew the grease filling in the gearbox.

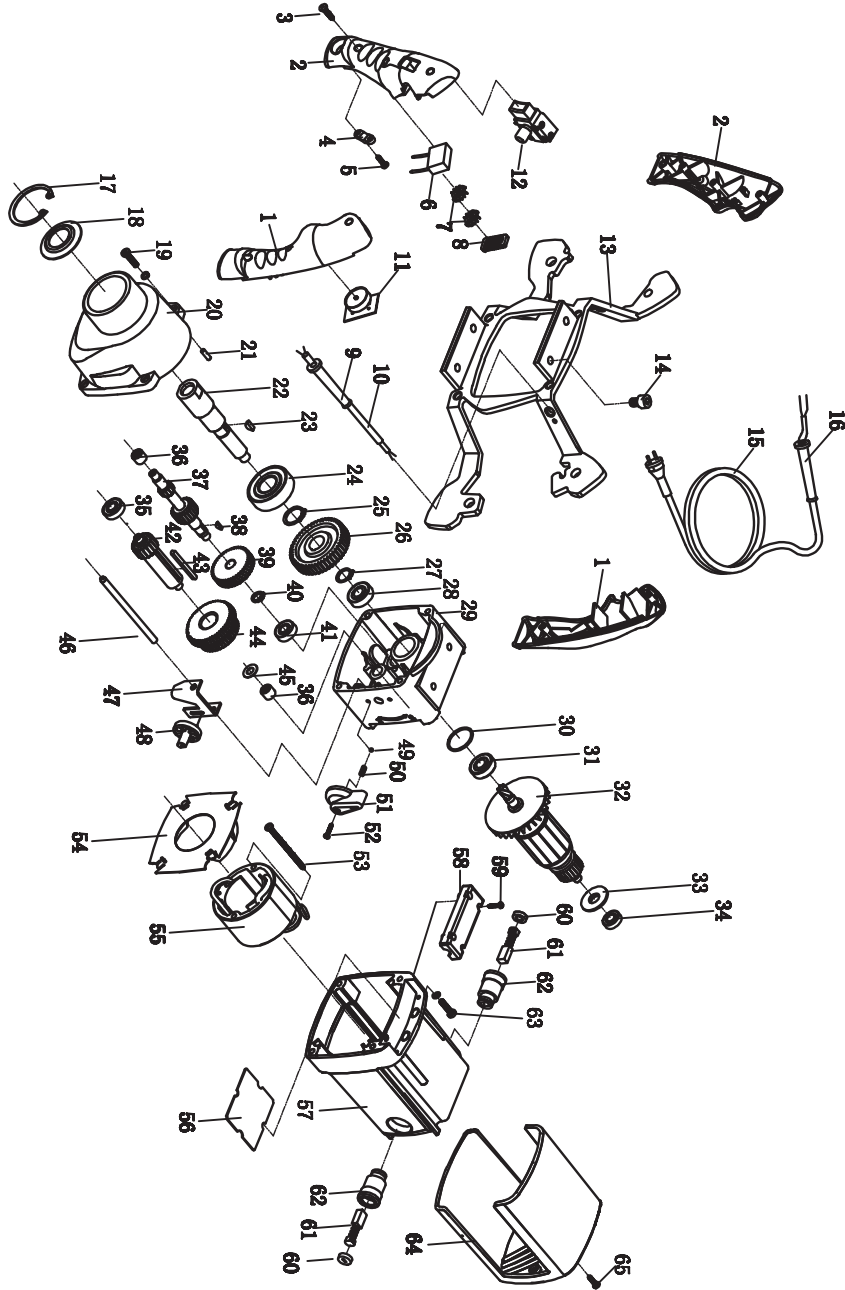
 To verify that the protective insulation remains intact, the machine must be subjected to a technical safety test afterwards. For this reason, this work must be performed exclusively by a professional electro-workshop.

Guarantee

We guarantee appliances in accordance with statutory / country – specific regulations (proof of purchase by invoice or delivery note).

Damage attributable to normal wear and tear, overload or improper handling will be excluded from the guarantee.

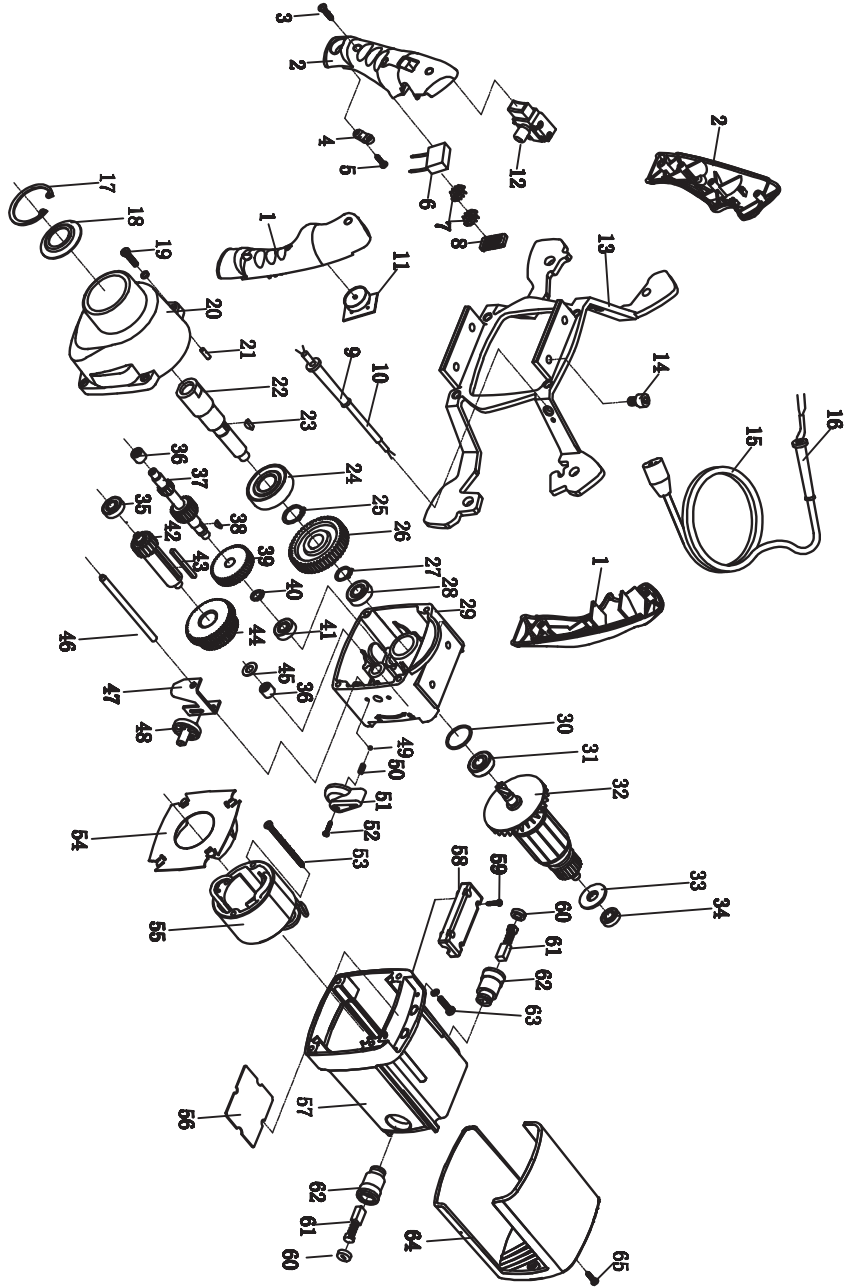
In case of product malfunction and issues, please send the machine, undismantled, to your dealer or the Service Center for review.





SPARE PARTS FOR 230V

| NO | Description | NO | Description |
|----|-------------------------------|----|---|
| 1 | Right Handle | 34 | Bearing 608 Z |
| 2 | Left Handle | 35 | Bearing 608 Z |
| 3 | Screw ST3.9X16 | 36 | Needle bearing HK0810 |
| 4 | Clamp | 37 | The second active gear shaft |
| 5 | Screw ST3.9X12 | 38 | Hemicycle key 2.5X3.7X10 |
| 6 | Capacitance | 39 | Motor gear |
| 7 | Round inductance | 40 | Safety ring \varnothing 10 |
| 8 | The inductance | 41 | Bearing 698 Z |
| 9 | Circuitry board | 42 | The third active gear shaft |
| 10 | Sleeve | 43 | Parallel key 4X4X45 |
| 11 | Cable | 44 | Spindle double gear |
| 12 | Switch | 45 | Flat washer \varnothing 16*8*0.8 |
| 13 | Steel frame | 46 | Pivot \varnothing 6*106 |
| 14 | Screw M8X12 | 47 | Coulisse |
| 15 | Cord | 48 | Partial core + eccentric wheel core |
| 16 | Sleeve (Big) | 49 | Ball \varnothing 4 |
| 17 | Safety ring \varnothing 47 | 50 | Spring \varnothing 0.5* \varnothing 3.9*L12 |
| 18 | Dust cover | 51 | Lever |
| 19 | Screw M5X20 | 52 | Screw ST3X16 |
| 20 | Bearing cover | 53 | Screw ST5X65 |
| 21 | Pin 4*12 | 54 | Airguide shim |
| 22 | Spindle | 55 | The stator (including the brush ring) |
| 23 | Hemicycle key 4X5X12 | 56 | Soft start plate |
| 24 | Bearing 6204 Z | 57 | Chassis |
| 25 | Safety ring \varnothing 20 | 58 | Clamp |
| 26 | Spindle gear | 59 | Screw ST3.5X12 |
| 27 | Safety ring \varnothing 15 | 60 | Brush cap |
| 28 | Bearing 6000 Z | 61 | Carbon brush 6.5*15*16 |
| 29 | Gear box | 62 | Brush holder |
| 30 | Sealring \varnothing 28*1.9 | 63 | Screw M5X25 |
| 31 | Bearing 6001 2RS | 64 | Rear cover |
| 32 | The rotor | 65 | Screw ST3.5X16 |
| 33 | M insulation gasket | | |





SPARE PARTS FOR 110V

| NO | Description | NO | Description |
|----|-------------------------------|----|---|
| 1 | Right Handle | 34 | Bearing 608 Z |
| 2 | Left Handle | 35 | Bearing 608 Z |
| 3 | Screw ST3.9X16 | 36 | Needle bearing HK0810 |
| 4 | Clamp | 37 | The second active gear shaft |
| 5 | Screw ST3.9X12 | 38 | Hemicycle key 2.5X3.7X10 |
| 6 | Capacitance | 39 | Motor gear |
| 7 | Round inductance | 40 | Safety ring \varnothing 10 |
| 8 | The inductance | 41 | Bearing 698 Z |
| 9 | Circuitry board | 42 | The third active gear shaft |
| 10 | Sleeve | 43 | Parallel key 4X4X45 |
| 11 | Cable | 44 | Spindle double gear |
| 12 | Switch | 45 | Flat washer \varnothing 16*8*0.8 |
| 13 | Steel frame | 46 | Pivot \varnothing 6*106 |
| 14 | Screw M8X12 | 47 | Coulisse |
| 15 | Cord | 48 | Core |
| 16 | Sleeve (Big) | 49 | Ball \varnothing 4 |
| 17 | Safety ring \varnothing 47 | 50 | Spring \varnothing 0.5* \varnothing 3.9*L12 |
| 18 | Dust cover | 51 | Lever |
| 19 | Screw M5X20 | 52 | Screw ST3X16 |
| 20 | Bearing cover | 53 | Screw ST5X65 |
| 21 | Pin 4*12 | 54 | Airguide shim |
| 22 | Spindle | 55 | The stator (including the brush ring) |
| 23 | Hemicycle key 4X5X12 | 56 | Soft start plate |
| 24 | Bearing 6204 Z | 57 | Chassis |
| 25 | Safety ring \varnothing 20 | 58 | Clamp |
| 26 | Spindle gear | 59 | Screw ST3.5X12 |
| 27 | Safety ring \varnothing 15 | 60 | Brush cap |
| 28 | Bearing 6000 Z | 61 | Carbon brush 6.5*15*16 |
| 29 | Gear box | 62 | Brush holder |
| 30 | Sealring \varnothing 28*1.9 | 63 | Screw M5X25 |
| 31 | Bearing 6001 2RS | 64 | Rear cover |
| 32 | The rotor | 65 | Screw ST3.5X16 |
| 33 | M insulation gasket | | |